



UP10A-XAX-XXX
UP10A-XFX-XXX
UP10A-XSX-XXX
UP10S-XSX-XXX
UP10B-XSX-XXX



Spare Parts Kits



PIVOT
UNIVERSAL PUMP

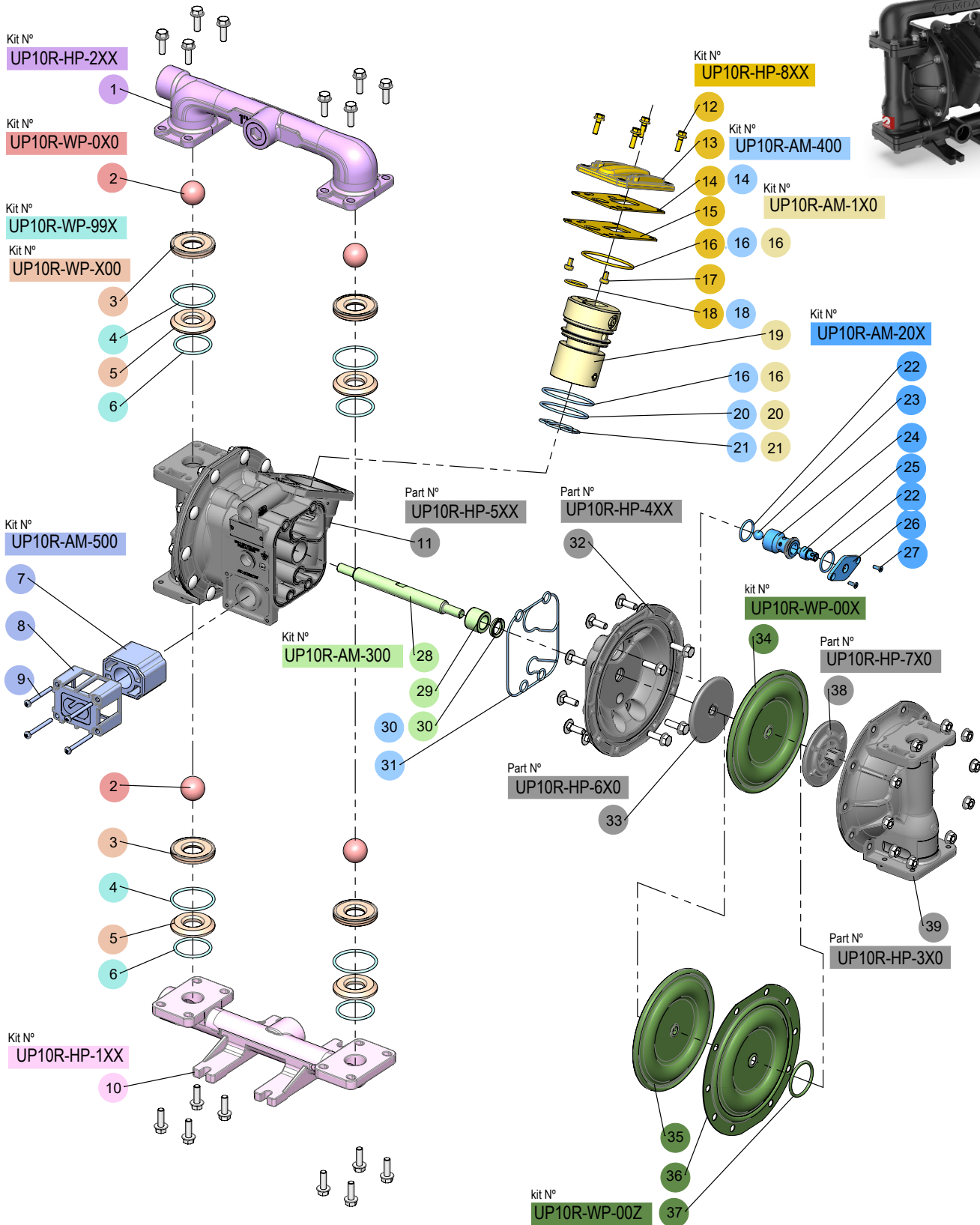
UP10 PIVOT SERIES, 1" METALLIC PUMPS

SPARE PARTS KITS

1" DOUBLE DIAPHRAGM METALLIC PUMP UP10


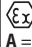
Part #

- UP10A-XAX-XXX UP10S-XSX-XXX
- UP10A-XFX-XXX UP10B-XSX-XXX
- UP10A-XSX-XXX



PUMP NOMENCLATURE

Examples: **UP10X-XXX-XXX**
UE10X-XXX-XXX-X

UP10X		XXX			XXX			X
PUMP TYPE	AIR MOTOR	HOUSINGS			WETTED PARTS			ACCESSORIES
1 Pump Type & Size	2 Central Body & Air Chambers	3 Fluid Ports / Location Multiport manifolds: central and lateral	4 Fluid Chambers & Manifolds	5 Hardware Bolts	6 Valve Seats	7 Valve Balls	8 Diaphragms Type & Material	9 Accessories (UE pumps only)
UP10 Universal Pump (Bolted) UE10 Universal Pump (Bolted) with electronic interface	 ATEX Certified A = Aluminium B = Conductive Polypropylene (only for pumps with Stainless Steel Fluid Chambers & Manifolds) S = AISI 316 Stainless Steel (only for pumps with Stainless Steel Fluid Chambers & Manifolds)	B = 1" BSP threaded ports N = 1" NPT threaded ports	 ATEX Certified A = Aluminium F = Ductile Iron S = AISI 316 Stainless Steel	C = Carbon Steel S = Stainless Steel	A = Aluminium H = TPE (Hytre [®]) M = TPV (Santoprene [®]) N = Nitrile (Buna-N) (Santoprene [®]) T = PTFE (Teflon [®]) S = AISI 316 Stainless Steel	H = TPE (Hytre [®]) M = TPV (Santoprene [®]) N = Nitrile (Buna-N) T = PTFE (Teflon [®]) S = AISI 316 Stainless Steel V = FKM (Viton [®])	Conventional A = TPV (Santoprene [®]) C = TPE (Hytre [®]) G = Nitrile (Buna-N) V = FKM (Viton [®]) Two piece Z = PTFE (Teflon [®]) with TPV (Santoprene [®]) backer	A = Diaphragm leak detectors B = Diaphragm leak detectors (ATEX) C = Stroke sensor D = Stroke sensor (PLC) E = Stroke sensor (ATEX) F = Diaphragm leak detectors + Stroke sensor G = Diaphragm leak detectors + Stroke sensor (PLC) H = Diaphragm leak detectors + Stroke sensor (ATEX)

Viton[®] & Teflon[®] is a registered trademark of the Chemours Company, Santoprene[®] and Hytre[®] is a registered trademark of the Celanese Corporation, L.P. Kynar[®] is a registered trademark of Arkema, Inc.

VALVE SEATS

Part #	Pos.	Description	Valid for:
UP10R-WP-A00	4x(5)	Aluminum Valve Seats (Hard)	UP10X-XXX- A XX
UP10R-WP-H00	4x(3)	TPE Hytrel Valve Seats (Soft)	UP10X-XXX- H XX
UP10R-WP-M00	4x(3)	TPV Santoprene Valve Seats (Soft)	UP10X-XXX- M XX
UP10R-WP-N00	4x(3)	Nitrile Valve Seats (Soft)	UP10X-XXX- N XX
UP10R-WP-S00	4x(5)	AISI-316 Stainless Steel Valve Seats (Hard)	UP10X-XXX- S XX

VALVE BALLS

Part #	Pos.	Description	Valid for:
UP10R-WP-0H0	4x(2)	TPE Hytrel Valve Balls	UP10X-XXX- H XX
UP10R-WP-0M0	4x(2)	TPV Santoprene Valve Balls	UP10X-XXX- M XX
UP10R-WP-0N0	4x(2)	Nitrile Valve Balls	UP10X-XXX- N XX
UP10R-WP-0S0	4x(2)	AISI-316 Stainless Steel Valve Balls	UP10X-XXX- S XX
UP10R-WP-0T0	4x(2)	PTFE Valve Balls	UP10X-XXX- T XX
UP10R-WP-0V0	4x(2)	FKM Viton Valve Balls	UP10X-XXX- V XX

DIAPHRAGMS

Part #	Pos.	Description	Valid for:
UP10R-WP-00A	2x(34)	TPV Santoprene Diaphragms	UP10X-XXX-XX A
UP10R-WP-00C	2x(34)	TPE Hytrel Diaphragms	UP10X-XXX-XX C
UP10R-WP-00G	2x(34)	Nitrile Diaphragms	UP10X-XXX-XX G
UP10R-WP-00V	2x(34)	FKM Viton Diaphragms	UP10X-XXX-XX V
UP10R-WP-00Z	2x(35), 2x(36), 2x(37)	PTFE + Hytrel Backup Diaphragms	UP10X-XXX-XX Z

VALVE SEATS O-RING

Part #	Pos.	Description	Valid for:
UP10R-WP-99T	4x(4), 4x(6)	PTFE Valve Seats O-rings	UP10X-XXX-XX Z
UP10R-WP-99V	4x(4), 4x(6)	FKM Valve Seats O-rings	UP10X-XXX-XX C UP10X-XXX-XX V
UP10R-WP-99N	4x(4), 4x(6)	Nitrile Valve Seats O-rings	UP10X-XXX-XX G
UP10R-WP-99E	4x(4), 4x(6)	EPDM Valve Seats O-rings	UP10X-XXX-XX A

AIR MOTOR

Part #	Pos.	Description	Valid for:
UP10R-AM-1A0	2x(16), 19, 20, 21	Aluminum Air Motor	UP10 A - XAX -XXX UP10 A - AFX -XXX
UP10R-AM-1B0	2x(16), 19, 20, 21	Conductive Polypropylene Air Motor	UP10 A - XSX -XXX UP10 S - XSX -XXX UP10 B - XSX -XXX
UP10R-AM-200	4x(22), 2x(23), 2x(24), 2x(25), 2x(26), 4x(27)	Air Sensors for Aluminum Central Body & Air Chamber	UP10 A - XAX -XXX UP10 A - AFX -XXX UP10 A - XSX -XXX
UP10R-AM-201	4x(22), 2x(23), 2x(24), 2x(25), 2x(26), 4x(27)	Air Sensors for Non-metallic Pumps & Stainless Steel Central Body Pumps	UP10 S - XSX -XXX UP10 B - XSX -XXX
UP10R-AM-300	28, 2x(29), 2x(30)	Central Rod	All UP10 Models
UP10R-AM-400	14, 2x(16), 18, 20, 21, 2x(30), 2x(31)	Air Motor Gaskets	All UP10 Models
UP10R-AM-500	7, 8, 4x(9)	Air Motor Exhaust	All UP10 Models

INLET MANIFOLDS

Part #	Pos.	Description	Valid for:
UP10R-HP-1AB	10	BSP Aluminum Inlet Manifold	UP10X- B AX-XXX
UP10R-HP-1AN	10	NPT Aluminum Inlet Manifold	UP10X- N AX-XXX
UP10R-HP-1FB	10	BSP Ductile Iron Inlet Manifold	UP10X- B FX-XXX
UP10R-HP-1FN	10	NPT Ductile Iron Inlet Manifold	UP10X- N FX-XXX
UP10R-HP-1SB	10	BSP AISI-316 Stainless Steel Inlet Manifold	UP10X- B SX-XXX
UP10R-HP-1SN	10	NPT AISI-316 Stainless Steel Inlet Manifold	UP10X- N SX-XXX

OUTLET MANIFOLDS

Part #	Pos.	Description	Valid for:
UP10R-HP-2AB	1	BSP Aluminum Outlet Manifold	UP10X- B AX-XXX
UP10R-HP-2AN	1	NPT Aluminum Outlet Manifold	UP10X- N AX-XXX
UP10R-HP-2FB	1	BSP Ductile Iron Outlet Manifold	UP10X- B FX-XXX
UP10R-HP-2FN	1	NPT Ductile Iron Outlet Manifold	UP10X- N FX-XXX
UP10R-HP-2SB	1	BSP AISI-316 Stainless Steel Outlet Manifold	UP10X- B SX-XXX
UP10R-HP-2SN	1	NPT AISI-316 Stainless Steel Outlet Manifold	UP10X- N SX-XXX

FLUID CHAMBERS

Part #	Pos.	Description	Valid for:
UP10R-HP-3A0	39	Aluminum Fluid Chamber (Black color)	UP10X- X A X -XXX
UP10R-HP-3F0	39	Ductile Iron Fluid Chamber	UP10X- X F X -XXX
UP10R-HP-3S0	39	AISI-316 Stainless Steel Fluid Chamber	UP10X- X S X -XXX

AIR CHAMBERS

Part #	Pos.	Description	Valid for:
UP10R-HP-4A0	32	Aluminum Air Chamber (Black color)	UP10 A - X A X -XXX UP10 A - X F X -XXX UP10 A - X S X -XXX
UP10R-HP-4S0	32	AISI-316 Stainless Steel Air Chamber	UP10 S - X S X -XXX
UP10R-HP-4B0	32	Conductive Polypropylene Air Chamber	UP10 B - X S X -XXX

PUMP CENTRAL BODY

Part #	Pos.	Description	Valid for:
UP10R-HP-5A0	11	Aluminum Central Body (Black color)	UP10 A - X A X -XXX UP10 A - X F X -XXX UP10 A - X S X -XXX
UP10R-HP-5S0	11	AISI-316 Stainless Steel Central Body	UP10 S - X S X -XXX
UP10R-HP-5B0	11	Conductive Polypropylene Central Body	UP10 B - X S X -XXX

AIR PISTONS

Part #	Pos.	Description	Valid for:
UP10R-HP-6C0	2x(33)	Carbon Steel Air Piston (Replacing Aluminum Air Pistons)	UP10 A -X A X-XXX UP10 A -X F X-XXX UP10 A -X S X-XXX
UP10R-HP-6S0	2x(33)	AISI-316 Stainless Steel Air Piston	UP10 S -X S X-XXX UP10 B -X S X-XXX

FLUID PISTONS

Part #	Pos.	Description	Valid for:
UP10R-HP-7A0	2x(38)	Aluminum Fluid Piston	UP10 A -X A X-XXX
UP10R-HP-7S0	2x(38)	AISI-316 Stainless Steel Fluid Piston	UP10 A -X F X-XXX UP10 A -X S X-XXX UP10 S -X S X-XXX UP10 B -X S X-XXX

AIR MOTOR COVER

Part #	Pos.	Description	Valid for:
UP10R-HP-8A0	4x(12), 13, 14, 15, 16, 2x(17), 18	Aluminum Air Motor Cover (Black color)	UP10 A -X A X-XXX UP10 A -X F X-XXX UP10 A -X S X-XXX
UP10R-HP-8S0	4x(12), 13, 14, 15, 16, 2x(17), 18	AISI-316 Stainless Steel Air Motor Cover	UP10 S -X S X-XXX
UP10R-HP-8B0	4x(12), 13, 14, 15, 16, 2x(17), 18	Conductive Polypropylene Air Motor Cover	UP10 B -X S X-XXX

EXTERNAL HARDWARE BOLTS

Part #	Pos.	Description	Valid for:
UP10R-HP-9S1 *	...	AISI-316 Stainless Steel External Hardware Bolts	UP10 A -X SS -XXX

* This spare part is also valid for upgrade the UP10**A**-X**XA**-XXX and UP10**A**-X**FC**-XXX pumps.



www.samoaindustrial.com

