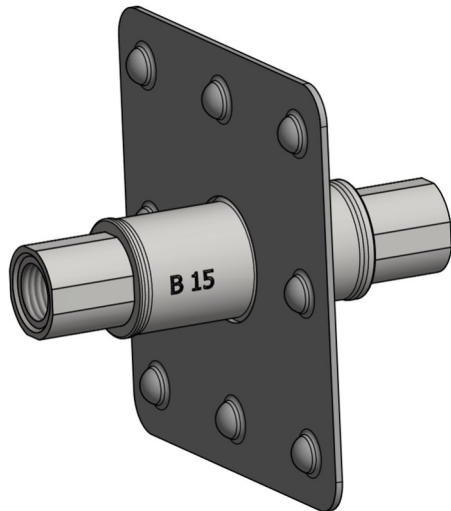
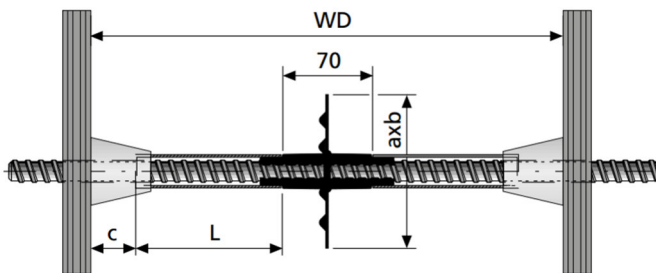


Picture



Product description



The B 15 water barrier has connection pieces on both sides onto which the Dist K-26 coarse pipe sections can be fitted to form a tight seal. This prevents concrete slurry from flowing in and "concreting in" the anchor bar. Square water barrier plate with cams for better concrete adhesion.

When using the adapter coupling, the dimension of 70 mm changes to 125 mm.

The water barrier B15 is manufactured as a cast part, made of high-quality GTW 45. A dimple plate with a sealing seam is welded in the middle of the sleeve to prevent water from circulating.

Calculation of pipe section (L):

-for K-26 = $(WD-2c-70)/2$

-with adapter coupling and for K-22 or FB-22 = $(WD-2c-125)/2$

Area of application / use

The B15 angular water barrier is used for tensioning points in the WU area of reinforced concrete structures.

It couples and simultaneously separates the anchor bars to prevent the passage of water within the tensioning point.

At the same time, the 120 x 120 mm plate effectively stops any water circulation.

The respective accessories and the corresponding adapter allow the combination with the spacer tubes: K-22, K-26 or FB-22.

B15 or Uni15 can be used as formwork anchors.

Technical data

(Material / specification)

Cast part:

-GTW 45

Sheet metal, nubbed:

-1.0332 (StW 22), or similar

-120x120mm

Working load: 90 kN

Breaking load (min.): 175 kN

Quality assurance

The consistent quality of the products is guaranteed by constant monitoring at the factory.

Delivery

Dispatch throughout Europe by **BETOMAX® systems** - Neuss or the specialist consultant responsible.

See the applicable price list for prices and terms of sale.

Service

Technical advice and planning and installation support by the specialist consultants responsible.

The data sheet is not binding, as conditions of use other than those listed are also conceivable. A guarantee can therefore only be given for the quality of our products in the context of our sales and delivery conditions, not for their successful further processing.