

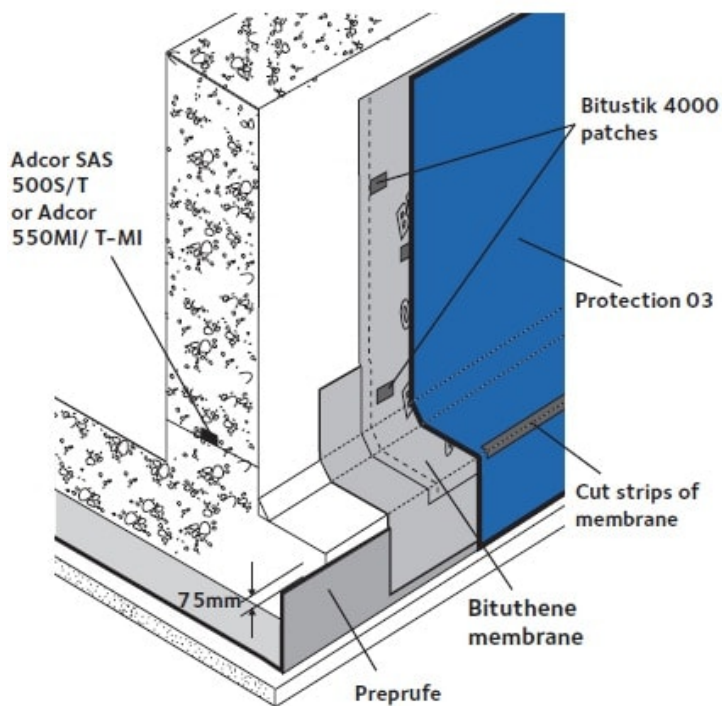
PROTECTION 03

Robust preformed asphaltic protective board specially engineered for the protection of GCP self adhesive membranes

Product Description

The boards are formulated specifically for their purpose using a special blend of cellulose fibers, bitumen and hydrocarbon resins for enhanced strength, resilience and durability.

Manufactured in Europe to a unique specification by a complex process of extrusion and compression, PROTECTION 03 is proven in the field over many years and is recommended by GCP to provide the most suitable and practical protection to all grades of self adhesive membranes.



Details shown are typical illustrations only and not working drawings. For assistance with working drawings and additional technical advice please contact GCP Technical Services

Advantages

- Recommended for use with BITUTHENE® and backfilled PREPRUFE® membrane.
- Rot resistant and durable
- High heat resistance - allowing use at elevated temperature in hot climates
- Provides protection to membrane against damage from backfill and site operations
- Robust but lightweight

- High resistance to impact and puncture at elevated temperatures
- Easy to install
- Cold applied

Installation

Boards shall be laid flat within the pallet prior to the application.

Vertical installation on post applied self adhesive membrane

1. Start at bottom of wall and apply to height of first backfill layer.
2. Wherever possible backfill and compact in layers to minimise risk of displacement of boards.
3. To locate boards, prime five 150 mm x 150 mm 'patches' (one in each corner, and one in the middle) of each board with suitable GCP Primer and allow to dry. Apply BITUSTIK™ 4000 150 mm double sided bitumen tape to the primed strips. Alternatively a mastic or contact adhesive recommended by GCP can be used to fix the boards.
4. Apply boards to clean dry membrane and roll 'patches' firmly. Remove release film from 'patches' and apply boards to membrane.
5. Once the protection board is fixed in place, subsequent boards shall be laid continuously by butt fitting the edges. Ensure boards stay close butt joints during backfilling and compaction.
6. Provide temporary propping of protection boards where necessary and remove as backfill is placed.

Horizontal protection of self adhesive membrane

Repeat the installation instructions for horizontal protection of membranes.

In high wind conditions provide temporary ballast to the protection boards.

Limitations

Maximum UV exposure of protection boards 30 days. On vertical walls due to the temporary fixing used, backfill is recommended as soon as installation is completed. Not recommended to use with SERVIDEK® liquid membrane.

NBS Specification Clause

Refer to Clause J40/380.

Supply

PROTECTION 03	
Length	2.03 m ± 6%
Width	0.90 m ± 6%
Thickness	3.0 mm ± 6%
Nominal Weight	5 kg/board (300 boards per pallet)
Ancillary Products	

BITUSTIK™ 4000

150 mm x 12 m rolls (6 rolls per carton)

Typical Properties

	TYPICAL VALUE	TEST METHOD
Static load, 20 Kg @ +35 °C	Pass	EN 12730
Impact Resistance, 80 cm @ +35 °C	Pass	EN 12691-A
Puncture Resistance, N		
+23 °C	300 ± 20	ASTM D 4833
+35 °C	225 ± 10	
+50 °C	200 ± 15	
Heat Resistance, +150 °C	Pass	EN 1110

All declared values shown in this data sheet are based on test results determined under laboratory conditions and with the product sample taken directly from stock in its original packing without any alteration or modification of its component parts.

Health and Safety

There is no requirement for a Safety Data Sheet for Protection Boards or tapes. For BITUTHENE® Primer S2, BITUTHENE® Primer B1 and PREPRUFE® SC1 read the product label and Safety Data Sheet (SDS) before use. Users must comply with all risk and safety phrases. SDSs can be obtained from GCP Applied Technologies or gcpat.com.

gcpat.ae | United Arab Emirates customer service: +971 4 5139560

GCP Applied Technologies Inc., 2325 Lakeview Parkway, Alpharetta, GA 30009, USA

P. O. Box 5006, Office 2104, 21 Floor, The Exchange Tower, Opp. JW Marriott Marquis Hotel, Business Bay, Dubai – United Arab Emirates

This document is only current as of the last updated date stated below and is valid only for use in the UAE. It is important that you always refer to the currently available information at the URL below to provide the most current product information at the time of use. Additional literature such as Contractor Manuals, Technical Bulletins, Detail Drawings and detailing recommendations and other relevant documents are also available on www.gcpat.ae. Information found on other websites must not be relied upon, as they may not be up-to-date or applicable to the conditions in your location and we do not accept any responsibility for their content. If there are any conflicts or if you need more information, please contact GCP Customer Service.

Last Updated: 2022-11-18

gcpat.ae/solutions/products/protection-03

Page 3 of 3

Ahlsell Sverige AB
Platsgjutet tel: +46 582 126 00
Prefab tel: +46 10 476 07 50

betongkomplement@ahlsell.se
www.ahlsell.se

ahlsell
Specialist inom **Betongkomplement**