

LIST OF CONTENTS

Overview	2
About these instructions	2
Symbols in these instructions	2
Delivery contents	2
Legend for the overview graphic	2
Symbols on your speedE® PocketDrive.....	2
Proper use	2
For your safety	3
Residual risks	3
Operation	6
Charging	6
Switching the LED lamp on and off	6
Installing the bits or extension rod	6
Fastening and loosening screws	7
After use	7
Care	7
Storage, carrying and transporting	7
Technical specification	8
Disposal	8
Maintenance and troubleshooting	8
Service and warranty	8
Technical specification	8

About these instructions

Original operating instructions

These instructions facilitate the safe and effective operation of the „speedE® PocketDrive“ e-screwdriver. Keep these instructions for future reference! Read these instructions prior to commencing any work. A prerequisite for safe operation is compliance with all safety instructions and operational directives in this publication. Observe the local accident prevention regulations and general safety requirements for the types of application for which the speedE® PocketDrive is to be used.

These instructions are copyright protected.

Except for internal purposes, disseminating these instructions to third parties, duplication of any kind, even of excerpts, as well as the exploitation and/or disclosure of the contents is not permissible without the written approval of Wiha Werkzeuge GmbH, subsequently referred to as the „Manufacturer“. Violations shall require compensation. The Manufacturer reserves the right to assert additional claims.

© Wiha Werkzeuge GmbH

Symbols in these instructions



WARNING!

This combination of symbol and signal word indicates a potentially dangerous situation that can lead to death or serious injury if not avoided.



ENVIRONMENTAL CONSERVATION

This combination of symbol and signal word indicates risk to the environment.



INFORMATION

This symbol emphasizes useful tips and recommendations as well as information for efficient and trouble-free operation.

Delivery contents

- speedE® PocketDrive
- Cable USB Type-C
- Manual
- Soft Bag
- 30 x 1/4"-25mm Standard bits
- 1 x 1/4"-58mm Magnetic Bit Holder

Legend for the overview graphic

- | | | | |
|---|--|---|----------------------|
| 1 | USB-C charge Port | 4 | 6.35mm Bit chuck |
| 2 | Screwdriver Handle | 5 | 30 x 1/4" 25 mm bits |
| 3 | Power switch
Two lights = power mode
One light = material
protection mode | 6 | LED light |
| | | 7 | Switch |

Symbols on your speedE® PocketDrive



Read the instructions!

This symbol instructs the user to read the instructions included.

Proper use

The e-screwdriver speedE® PocketDrive is exclusively intended for fastening screws into metric threads or pre-drilled materials and tightening them or to remove the screws and loosen them. It is intended for machine screws in pre-drilled or self-tap screw in soft materials. The electric screw fastening support makes it easier to fasten screws.



The LED lamp on the speedE® PocketDrive can be used as a torch.

Improper use

Any use beyond and differing from the proper use is considered improper use. In particular, observe the following points:

- Do not use the electric cut out on the engine as a torque tool.
- Do not use the speedE® PocketDrive for levering or

FOR YOUR SAFETY

- chiseling.
- Avoid impact on the charge port
- Do not heat or deform speedE@ PocketDrive.
- speedE@ PocketDrive is not suitable for continuous operation.

Residual risks



Read all safety warnings, instructions, illustrations and specifications provided with this power tool.

Failure to follow all instructions listed below may result in electric shock, fire and/or serious injury.

Save all warnings and instructions for future reference.

Work area safety

- **Keep work area clean and well lit.** Cluttered or dark areas invite accidents.
- **Do not operate power tools in explosive atmospheres, such as in the presence of flammable liquids, gases or dust.** Power tools create sparks which may ignite the dust or fumes.
- **Keep children and bystanders away while operating a power tool.** Distractions can cause you to lose control.

Electrical safety

- **Power tool plugs must match the outlet. Never modify the plug in any way. Do not use any adapter plugs with earthed (grounded) power tools.** Unmodified plugs and matching outlets will reduce risk of electric shock.
- **Avoid body contact with earthed or grounded surfaces, such as pipes, radiators, ranges and refrigerators.** There is an increased risk of electric shock if your body is earthed or grounded.
- **Do not expose power tools to rain or wet conditions.** Water entering a power tool will increase the risk of electric shock.
- **Do not abuse the cord. Never use the cord for carrying, pulling or unplugging the power tool. Keep cord away from heat, oil, sharp edges or moving parts.** Damaged or entangled cords increase the risk of electric shock.

Personal safety

- **Stay alert, watch what you are doing and use common sense when operating a power tool. Do not use a power tool while you are tired or under the influence of drugs, alcohol or medication.** A moment of inattention while operating power tools may result in serious personal injury.
- **Use personal protective equipment. Always wear eye protection.** Protective equipment such as a dust mask, non-skid safety shoes, hard hat or hearing protection used for appropriate conditions will reduce personal injuries.
- **Prevent unintentional starting. Ensure the switch is in the off-position before connecting to power source and/or battery pack, picking up or carrying the tool.** Carrying power tools with your finger on the switch or energising power tools that have the switch on invites accidents.
- **Remove any adjusting key or wrench before turning the power tool on.** A wrench or a key left attached to a rotating part of the power tool may result in personal injury.
- **Do not overreach. Keep proper footing and balance at all times.** This enables better control of the power tool in unexpected situations.
- **Dress properly. Do not wear loose clothing or jewellery. Keep your hair and clothing away from moving parts.** Loose clothes, jewellery or long hair can be caught in moving parts.
- **Do not let familiarity gained from frequent use of tools allow you to become complacent and ignore tool safety principles.** A careless action can cause severe injury within a fraction of a second.

Power tool use and care

- **Do not force the power tool. Use the correct power tool for your application.** The correct power tool will do the job better and safer at the rate for which it was designed.
- **Do not use the power tool if the switch does not turn it on and off.** Any power tool that cannot be controlled with the switch is dangerous and must be repaired.
- **Store idle power tools out of the reach of children and do not allow persons unfamiliar with the power tool or these instructions to operate the power tool.** Power tools are dangerous in the hands of untrained users.
- **Maintain power tools and accessories. Check for**

misalignment or binding of moving parts, breakage of parts and any other condition that may affect the power tool's operation. If damaged, have the power tool repaired before use. Many accidents are caused by poorly maintained power tools.

- Use the power tool, accessories and tool bits etc. in accordance with these instructions, taking into account the working conditions and the work to be performed. Use of the power tool for operations different from those intended could result in a hazardous situation.
- Keep handles and grasping surfaces dry, clean and free from oil and grease. Slippery handles and grasping surfaces do not allow for safe handling and control of the tool in unexpected situations.
- Hold the power tool by the insulated grip surfaces if you carry out work in which the screw may come into contact with hidden power lines. If the screw comes into contact with a live power line it can make metal objects alive and lead to an electric shock.

Battery tool use and care

- Recharge only with the charger specified by the manufacturer. A charger that is suitable for one type of battery may create a risk of fire when used with another battery.
- Use power tools only with specifically designated battery. Use of any other batteries may create a risk of injury and fire.
- When speedE® PocketDrive is not in use, keep the battery away from other metal objects, like paper clips, coins, keys, nails, screws or other small metal objects, that can make a connection from one terminal to another. Shorting the battery terminals together may cause burns or a fire.
- Under abusive conditions, liquid may be ejected from the battery; avoid contact. If contact accidentally occurs, flush with water. If liquid contacts eyes, additionally seek medical help. Liquid ejected from the battery may cause irritation or burns.
- Do not use a battery pack or tool that is damaged or modified. Damaged or modified batteries may exhibit unpredictable behaviour resulting in fire, explosion or risk of

injury.

- Do not expose a battery pack or tool to fire or excessive temperature. Exposure to fire or temperature above 130 °C may cause explosion.
- Follow all charging instructions and do not charge the battery pack or tool outside the temperature range specified in the instructions. Charging improperly or at temperatures outside the specified range may damage the battery and increase the risk of fire.

Service

- Have your power tool serviced by a qualified repair person using only identical replacement parts. This will ensure that the safety of the power tool is maintained.
- Never service damaged battery packs. Service of battery packs should only be performed by the manufacturer or authorized service providers.

Safety instruction for Screwdriver

- Hold the power tool by insulated gripping surfaces, when performing an operation where the fastener may contact hidden wiring. Fasteners contacting a "live" wire may make exposed metal parts of the power tool "live" and could give the operator an electric shock.

Safety instructions for chargers

- Do not expose the charger to rain or damp. There is an increased risk of an electric shock if water penetrates the charger.
- Use the voltages indicated in the technical specifications to recharge the e-screwdriver speedE® PocketDrive. There is a risk of fire and explosion if you do not.
- Keep the charger clean. There is a risk of electrical shock if it is dirty.
- Check the charger, cable and plug before use each time. Do not use the charger if you detect any damage. Do not open up the charger itself. Have it repaired by qualified technical staff using original spare parts only. There is an increased risk of electric shock from damaged chargers, cables and plugs.
- Do not use the charger on easily flammable surfaces,

FOR YOUR SAFETY

such as paper or textiles, or in flammable surroundings.

There is a risk of fire due to the charger heating up during charging.

- **Children must be supervised.** You must ensure that children do not play with the charger.
- **Children and persons who are not able to use the charger safely due to their limited physical, sensory, or mental capabilities, or lack of experience and/or knowledge must not use it unsupervised or without instruction by a responsible person.** If not, there is a risk of incorrect use and injury.

CE conformity declaration

We declare and assume sole responsibility that the product described under „Technical specifications“ complies with the following standards and directives: EN 12100:2011-03, EN 62841-1:2016, EN 62841-2-2:2015 and EN 60335-1:2020, EN 60335-2-29:2019. According to the provisions of directives 2011/65/EU, 2014/35/EU, 2014/30/EU, 2006/42/EC.

The technical documents (2006/42/EC) are available from:

Wiha Werkzeuge GmbH
Obertalstraße 3-7
78136 Schonach

Germany



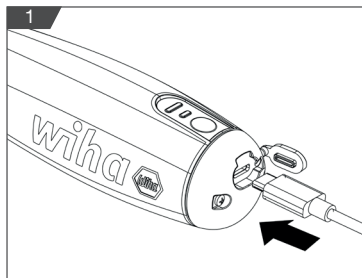
WilhelmHahn
Director
Schonach, 30.05.2023

CE Meets EU requirements.

**UK
CA** Meets UK requirements.

Charging

! Only use the charger specified by the manufacturer to charge speedE® PocketDrive at an ambient temperature of 0-40°C.



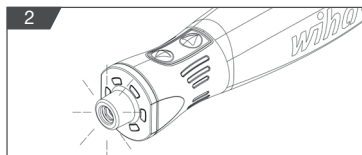
The battery inside e-screwdriver speedE® PocketDrive is delivered partially charged! Prior to first use, fully charge the battery using the cable included and recommended charger which specified by manufacturer. The battery is protected against complete discharge during use. If the battery is discharged, the speedE® PocketDrive is switched off by a protective circuit and the electric screw-fastening support ceases movement.

The LED lamp flashes to indicate low charge level (< 20%). The electric screw-fastening support works up to a charge level of 20%. After that you can continue to use the speedE® PocketDrive without the electric screw-fastening support.

1. Open the cover of charge port.
2. Plug in the cable into charge port of USB-C.
3. Connect the USB-A of cable with computer's USB port or power adapter and then connect the power adapter to the power socket.

i The charge level is showed on the power indicator. For this, press the power switch for 2 seconds. If the LED indicator flashes, it means that the unit is charging. If only the first LED flashes, it means that the state of charge is less than 45 %. If the first LED is lit and the second LED flashes, it means that the state of charge is less than 80 %. If two LEDs are lit, it means that the state of charge is greater than 80 %.

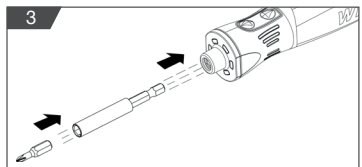
Switching the LED lamp on and off



1. Push the clockwise or counterclockwise switch.
2. The LED lamp is illuminated for 5 s and then switches off automatically.

! Do not look directly into the LED lamp.

Installing the bits or extension rod



To prevent accidental injury, do not touch the forward/ reverse and main switch while installing or removing the bits.

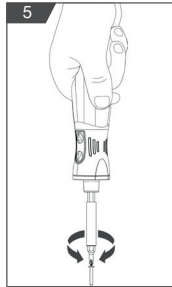
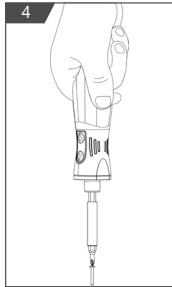
1. To install the bit, push the bit or extension rod directly into the hex drive chuck until it is installed in place.
2. To remove the bit, pull out the bit or extension rod directly.

AFTER USE

Fastening and loosening screws



Use the speedE® PocketDrive at an ambient temperature of -5 °C – 40 °C.



1. Place the speedE® PocketDrive on the screw head.
2. Push the power switch, to choose one of two torque levels:



One light = material protection mode; the torque is 1 Nm



Two lights = power mode; the torque is 5 Nm

3. Start the speedE® PocketDrive - fastening support by push the switch
Push the clockwise switch to fasten the screw.
Push the counterclockwise switch to loosen the screw.

Care

Clean the speedE® PocketDrive regularly by wiping with a slightly dampened cloth. Keep the grip surfaces dry, clean and free from oil or grease. Verify regularly that the moving parts of the speedE® PocketDrive function as intended and do not jam, and they are not broken or damaged.

Storage, carrying and transporting

The contained li-ion batteries are subject to the requirements of the Hazardous Goods Law. The user may transport the tool on the street without further requirements.

You must observe special packaging and labelling requirements if you are using a third party for shipping. Consult an expert in hazardous goods for preparation of the item to be shipped.

This tool is equipped with a li-ion rechargeable battery. To obtain the longest possible battery life, the following is recommended:

- Store the tool where the temperature at -10°C - 50°C and free of moisture.
- Store the tool in a 30–50% charged condition.
- Every six months of storage, fully charge the tool and then use it.
- Do not store the tool in an environment with temperature higher than 50 °C.
- To avoid serious personal injury, always unplug the charger before cleaning or performing any maintenance. Never disassemble the tool. Contact your service dealer/distributor or info.de@wiha.com for all repairs.
- To prevent accidental injury, make sure that you carry the product safely stored.
- The battery is not replaceable.

Disposal

Improper disposal is hazardous to the environment! Improper disposal can result in danger to the environment.



- Never dispose of your speedE® PocketDrive in the household waste.
- Have approved specialists dispose of electric scrap and electronic components.
- In case of doubt, consult with your local municipal authority or specialised disposal companies regarding environmental disposal.

Maintenance and troubleshooting

The speedE® PocketDrive is maintenance-free and requires no lubrication. Do not open the product. Should the speedE® PocketDrive no longer work, contact an authorized customer service point for wiha power tools. Have damaged parts repaired before use. Do not correct issues yourself! State the article number according to the nameplate of your speedE® PocketDrive for all inquiries and spare part orders. For additional information regarding the repair and maintenance of your speedE® PocketDrive, exploded drawings and information about spare parts, visit: www.wiha.com

Service and warranty

Loss of the nameplate voids all warranty claims! The nameplate is found on the front lid near the LED lamp.

Customer care

Wiha Werkzeuge GmbH
Obertalstraße 3 – 7
78136 Schonach
GERMANY

Phone: +49 77-22 959-0
Fax: +49 77-22 959-160
E-Mail: info.de@wiha.com
Website: www.wiha.com

Technical specification

Article number	592T101
Order number	45791
Rated voltage	3.7V D.C
No-load speed	280 rpm
Max. electric torque	1.0Nm / 5.0Nm
Max. torque in manually	12Nm
Protection class	IP54
Charging environment temperature	0~40 °C
Battery capacity	2000 mAh
Number of battery	1
Recommended charger	5V-2A
Charging time	60 min
Weight (without bit)	329 g
Dimensions	203 x 76 x 183 mm