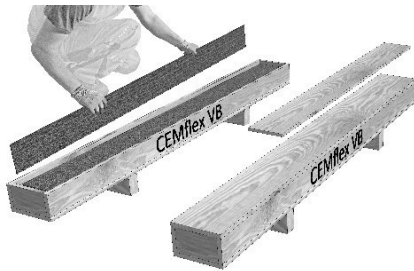


# Montageanvisning

## Fogleck CEMflex

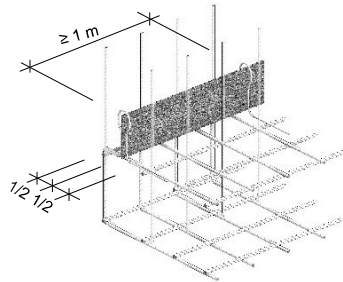
### Montageanvisning CEMflex fogleck

Installation guide for CEMflex waterstop



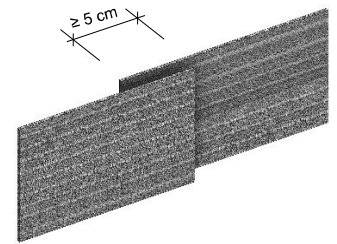
Ta ut ett CEMflex bleck från emballaget

Remove a CEMflex plate from the box



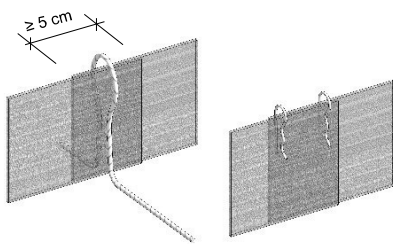
Placera i mitten av väggen och fixera med montagebygel omega c/c ca 1 m

Place the CEMflex plate in the middle of the wall, and attach it with an  $\Omega$ -holder



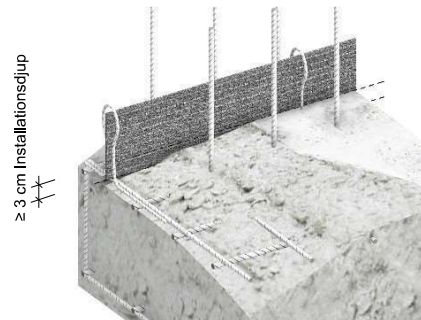
Överlappa minst 5 cm

The overlap must be at least 5 cm



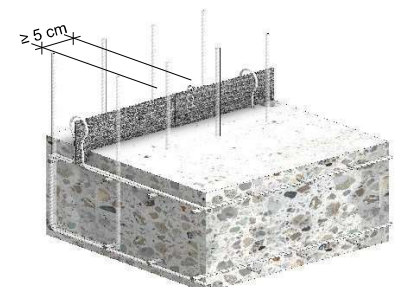
Fixera med montagebygel omega, alternativt med skarvclips CEMflex

Fix the CEMflex plate with an  $\Omega$ -holder or alternatively with CEMflex Clip



Installationsdjup minst 3 cm i gjutetapp 1

Ensure that the CEMflex plate is embedded at least 3 cm into the first pour of concrete



**VIKTIGT!** Minsta överlappning 5 cm och installationsdjup 3 cm

**VERY IMPORTANT!**  
Overlap must be at least 5 cm and embedding must be at least 3 cm

Använd alltid skyddsutrustning enligt arbetsplatsens riskbedömning

# Montageanvisning

## Fogbleck CEMflex

### Alternativt montage i färsk betong

- Viktigt att tillgodose att överlappet görs på ett korrekt sätt så att anliggning sker på hela överlappet
- Säkerställ att blecket får full betongomslutning i den våta betongen, skall ske omgående efter gjutning

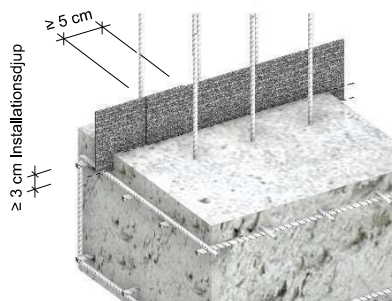
*Alternatively, you can push the CEMflex into fresh concrete*

- Important to ensure that the overlap is done in a correct way so the sheet is in full contact on the entire overlap
- Ensure that the sheet gets full concrete-enclosure in the wet concrete, it must be done immediately after casting



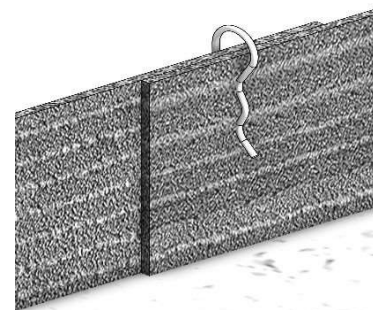
Tryck ner CEMflex minst 3 cm i den färska betongen

*Insert CEMflex into the fresh concrete (min 3 cm)*



Överlappa minst 5 cm, installationsdjupet måste vara minst 3 cm

*Overlap must be at least 5 cm embedding must be at least 3 cm*



Säkra överlappen med skarvclips

*Clip the CEMflex overlap together with CEMflex clips*

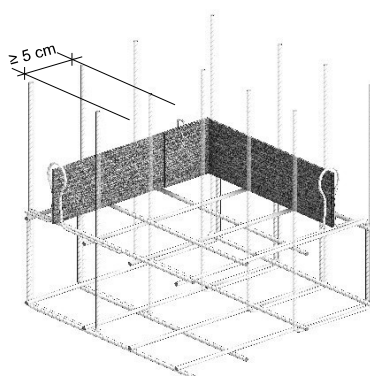
### Hörn

*Corner forms*



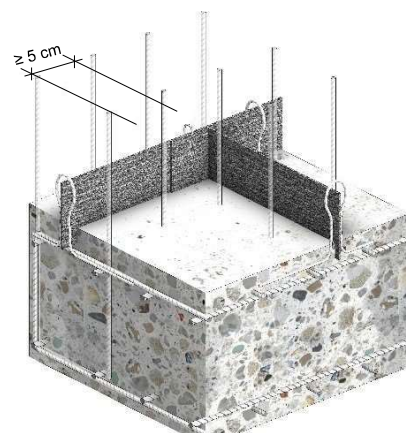
Böj CEMflex mot ett underlag med rätt form

*Bend the CEMflex VB plate as required*



Placera i mitten av väggen och fixera med montagebygel omega

*Place the CEMflex in the middle of the wall*



Vid behov av "T-skarv", böj CEMflex Och överlappa minst 5 cm

*If a T joint is needed, bend CEMflex with a minimum overlap of 5 cm*

**Använd alltid skyddsutrustning enligt arbetsplatsens riskbedömning**