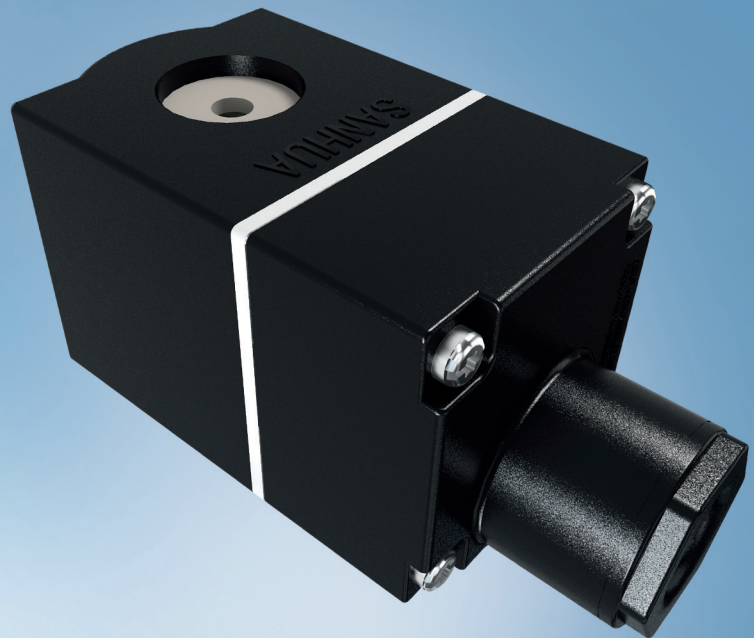


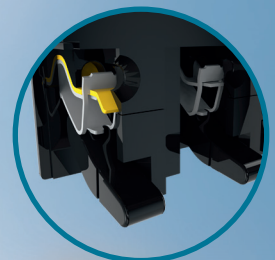
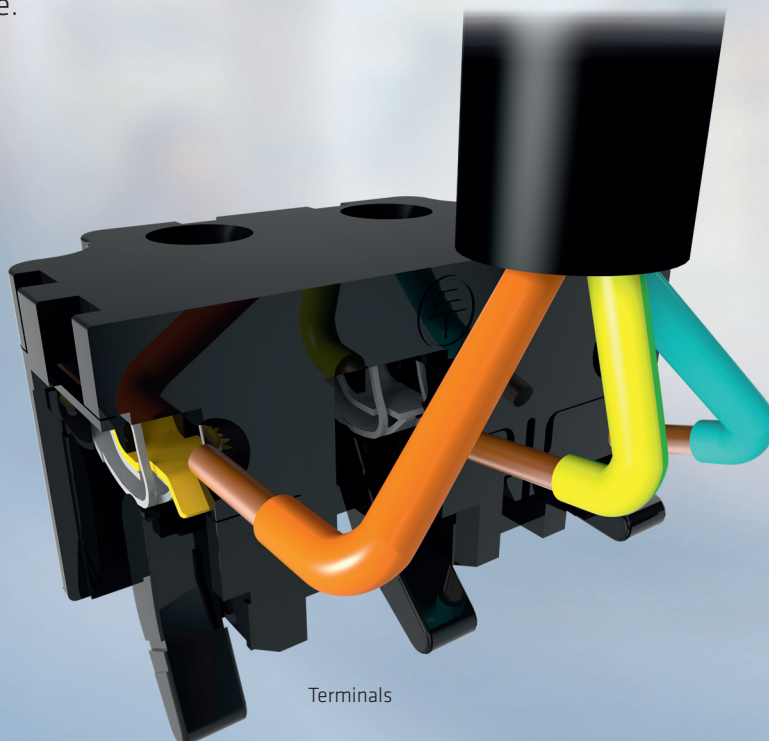
New MDF Coil

- Easy to connect by wrench design vs. Screw connection
- Much shorter installation time
- Protection class IP67

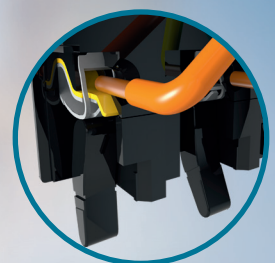


Sanhua cable bridge design advantage:

- Wrench design vs. Screw connecting: faster and more convenient, the pull-off force are over 30N, reliable
- the wiring insert installation speed is faster - min. 30 sec
- the cable bridge part can be removed from the housing, more convenient to install the 2.5mm² loose and solid wire.



Wiring hole



Insert the peeled wire core

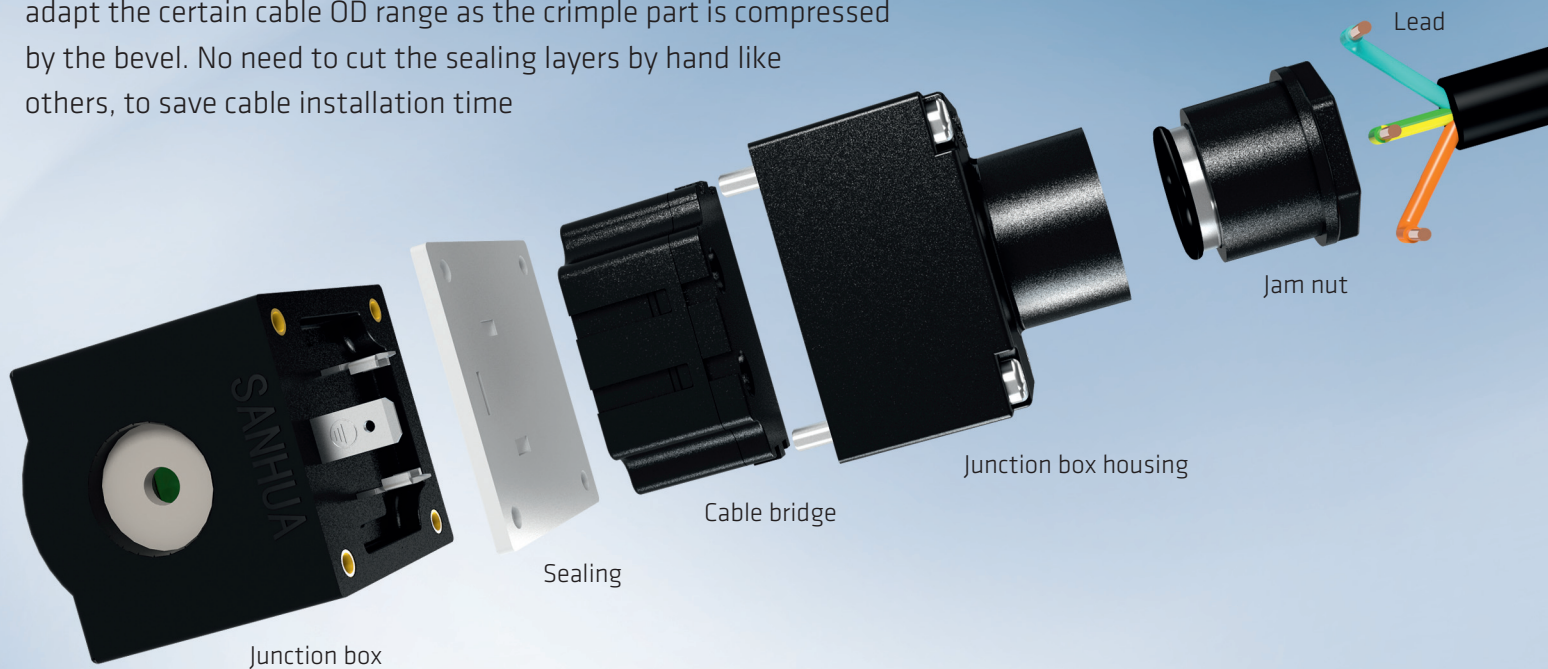


Press down the wrench and the wire will be tightly clamped.

MDF coil improvements



Jam nut bevel wire hole design, makes the sealing ring automatically adapt the certain cable OD range as the crimple part is compressed by the bevel. No need to cut the sealing layers by hand like others, to save cable installation time

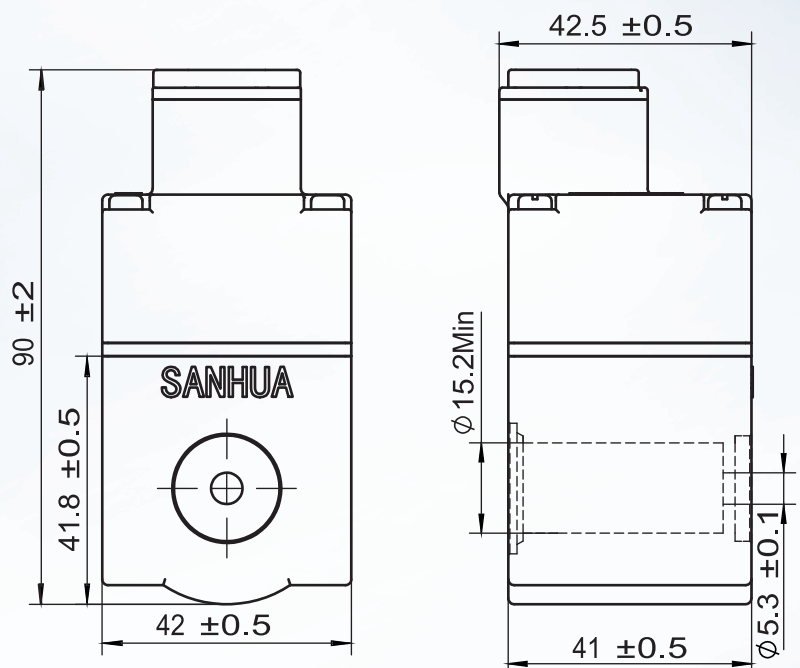


Technical parameters of Coil

Model Coil	Rated voltage [V]	Supply	Power [W]	Voltage Tolerance	Insulation Class	Protection class (w/plug)	Wiring type
MQ-A11024-000001	24	AC	9,5(50Hz) 8,5(60Hz)	-15% +10%	F	IP67	DIN Plug
MQ-A1111A-000001	110~120		11,5(50Hz) 10(60Hz)				
MQ-A1122G-000001	220~240		11(50Hz) 9,5(60Hz)				

Dimensions - Coil

Coils with DIN Plug
(MQ-A11 and MQ-D11 series)



SANHUA INTERNATIONAL EUROPE
info@sanhuaeurope.com / www.sanhuaeurope.com