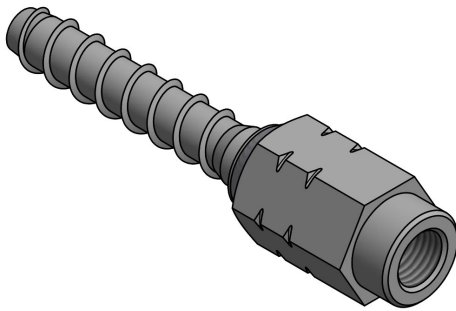


### Description

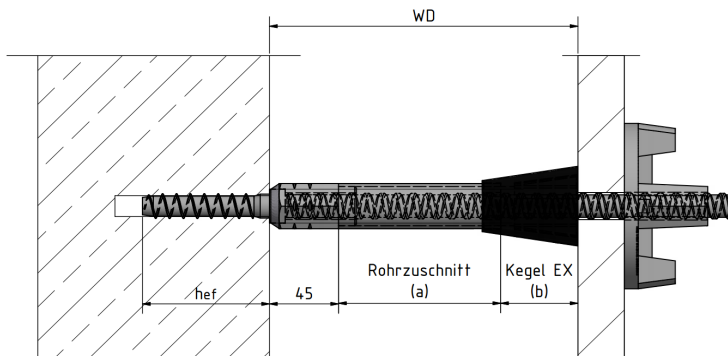


K-TEC MS

### Product description

The K-TEC MS is for the one-sided anchoring in existing concrete foundations.

### Area of application/use



The K-TEC MS is, for example, for anchoring in single-sided formwork.

When using the spacer tube K-26 and a cone EX 26 or cone EX 26/50, the anchor bar is retrievable.

The cone hole can be filled up with mortar or, after using the cone EX 26/50, it can be sealed using a suitable facing concrete plug. Other combinations are also possible.

Calculating the pre-cut part (a):  $WD-45\text{mm}-b$

Dimension b for:

Cone IN 26 = 25mm

Cone EX 26 = 25mm

Cone EX 26/50 = 50mm

### Installation/use

1. Drilling the hole
  - Drill nominal diameter: 14mm
  - Hole depth: 100mm
2. Clean the hole and screw in the K-TEC MS using a SW 30mm tool.

**NOTE:** Make sure the self-cutting thread is fully screwed into the hole.

3. Assembling the other components.

Distance between axes and edge clearances:

min. distance between axes:  $3x h_{ef}$

min. edge clearance:  $1.5x h_{ef}$

$h_{ef} = 80\text{mm}$

Minimum component thickness: 150mm

### Technical data

(Material/specification)

Hexagon nut B15

- S 355 JR

K-TEC MS

- electrolytically galvanised

Load data:

Excerpt of characteristic values for

C 20/25 = 28.9 kN

(as per test certificate (test certificate) no. 213000080-19 of the MPA NRW)

C 30/37 = 44.1 kN

(as per test certificate (test certificate) no. 213000236-20 of the MPA NRW)

### Quality assurance

The consistent quality of the products is guaranteed by constant internal quality controls in the factory.

### Shipping

Europe-wide shipping by **BETOMAX® systems** in Neuss or the responsible specialist consultant.

Please refer to the valid price list for prices and terms of sale.

### Service

Technical consulting and support for planning and assembly by the responsible specialist consultants.

The data sheet is not binding as conditions of use that are not listed are feasible

A guarantee can thus only be furnished for the quality of our products Within the scope of our Conditions of Sale and Delivery, but not for the successful further processing of them.