

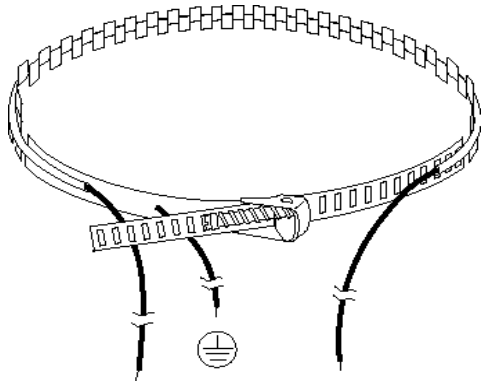


Spare Parts List for R 410 A
Compliant Scroll Compressors - H/M Range

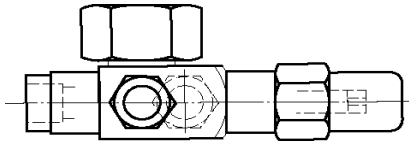
ZP



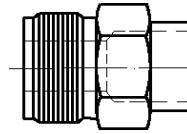
04/02



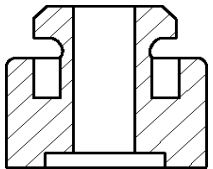
1



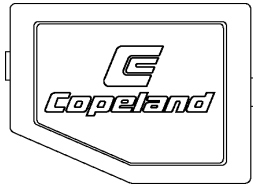
2



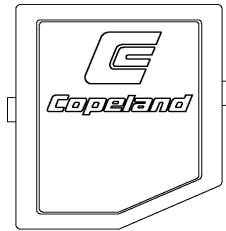
3



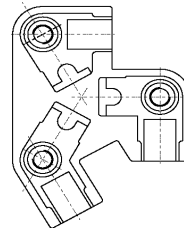
7



8



9



10



11

Diagram No.	Description		Part No.	ZP 23 K3E-PFJ	ZP 23 K3E-TF*	ZP 26 K3E-PFJ	ZP 26 K3E-TF*	ZP 32 K3E-PFJ	ZP 32K3E-TF*	ZP 41 K3E-PFJ	ZP 41 K3E-TF*	ZP 54 K3E-TF*
1	Crankcase heater, 800 mm lead length	240 V, 40 W	8025761	1	1	1	1	1	1	1	1	
1	Crankcase heater, 800 mm lead length	480 V, 40 W	8030836		1		1		1		1	1
1	Crankcase heater, 800 mm lead length	240 V, 70 W	8039902	1	1	1	1	1	1	1	1	1
1	Crankcase heater, 550 mm lead length	480 V, 70W	8039899		1		1		1		1	1
2	Rotalock shut-off valve with gasket, Discharge	1" - 14, I.D. 5/8"	8032025	1	1	1	1	1	1	1	1	1
	Gasket		2495928	1	1	1	1	1	1	1	1	1
2	Rotalock shut-off valve with gasket, Suction	1 1/4" - 12, I.D. 7/8"	8032989	1	1	1	1	1	1	1	1	1
	Gasket		2495939	1	1	1	1	1	1	1	1	1
	Kit Rotalock shut-off valves with gaskets, Suction / Discharge	1 1/4" - 12, I.D. 7/8"; 1" - 12, I.D. 5/8"	8025772	1	1	1	1	1	1	1	1	1
3	Rotalock adapter, brazing to Rotalock, Discharge	1/2" => 1" - 14	8026899	1	1	1	1	1	1	1	1	1
	Gasket		2495928	1	1	1	1	1	1	1	1	1
3	Rotalock adapter with gasket, brazing to Rotalock, Suction	3/4" o. 7/8" => 1 1/4" - 12	8026935	1	1	1	1	1	1	1	1	1
	Gasket		2495939	1	1	1	1	1	1	1	1	1
	Rotalock adapter with gaskets, brazing to Rotalock, Suction / Discharge	3/4" o. 7/8" => 1 1/4" - 12 1/2" => 1" - 14	8030303	1	1	1	1	1	1	1	1	1
7	Kit mounting parts, damper, sleeves and spacer (single compressor)		8000822	1	1	1	1	1	1	1	1	1
8	Terminal box cover		8031657	1	1	1	1	1	1	1	1	
	Gasket for terminal box cover		8811322	1	1	1	1	1	1	1	1	
9	Terminal box cover		8019820									1
	Gasket for terminal box cover		8019842									1
10	Terminal block		8804353									1
	Terminal block screw	10 - 32 UNF x 1/2"	8020084									3
11	Run capacitor	40 µF / 370 V, 50 Hz	8021565	1								
11	Run capacitor	45 µF / 370 V, 50 Hz	8025261			1						
11	Run capacitor	50 µF / 370 V, 50 Hz	8025272					1				
11	Run capacitor	60 µF / 370 V, 50 Hz	8502306							1		