

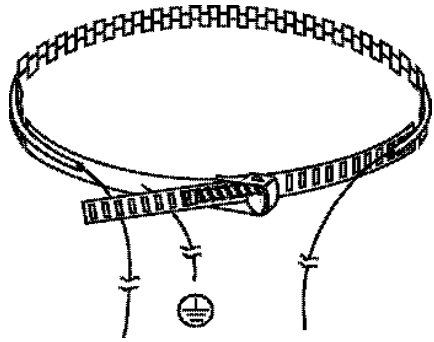


Spare Parts List for  
Compliant Scroll Compressors

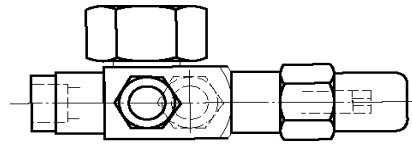
ZB



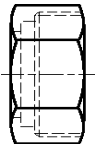
04/02



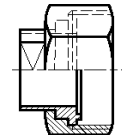
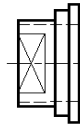
1



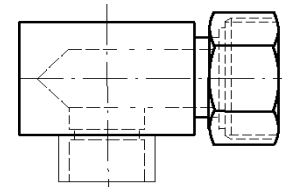
2



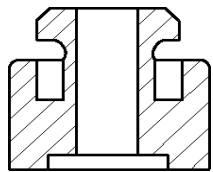
5



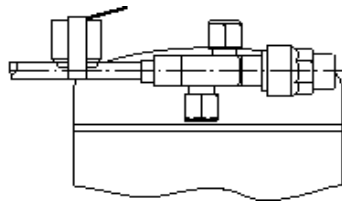
4



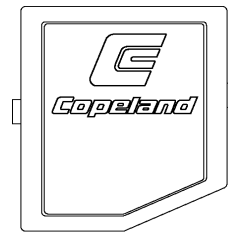
6



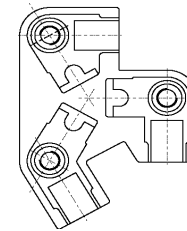
7



8



9



11



12

Diagram No.	Description		Part No.	ZB 19 KCE-PFJ	ZB 19 KCE-TF*	ZB 21 KCE-PFJ	ZB 21 KCE-TF*	ZB 26 KCE-PFJ	ZB 26 KCE-TF*	ZB 30 KCE-TF*	ZB 38 KCE-TF*	ZB 45 KCE-TF*
1	Crankcase heater, 800 mm lead length	240 V, 40 W	8025761	1	1	1	1	1	1			
1	Crankcase heater, 550 mm lead length	480 V, 40 W	8030836		1		1		1			
1	Crankcase heater, 800 mm lead length	240 V, 70 W	8039902							1	1	1
1	Crankcase heater, 550 mm lead length	480 V, 70W	8039899							1	1	1
2	Rotalock shut-off valve with gasket, Discharge	1" - 14, I.D. 5/8"	8032025	1	1	1	1	1	1	1	1	1
	Gasket		2495928	1	1	1	1	1	1	1	1	1
2	Rotalock shut-off valve with gasket, Suction	1 1/4" - 12, I.D. 7/8"	8032989	1	1	1	1	1	1	1	1	1
	Gasket		2495939	1	1	1	1	1	1	1	1	1
	Kit Rotalock shut-off valves with gaskets, Suction / Discharge	1 1/4" - 12, I.D. 7/8"; 1" - 12, I.D. 5/8"	8025772	1	1	1	1	1	1	1	1	1
4	Rotalock adapter, Rotalock to brazing, straight, Discharge	1" - 14 => 1/2"	8016047	1	1	1	1	1	1	1	1	1
	Kit Rotalock adapter, with adapter-nut and gasket, Rotalock to brazing, straight, Discharge	1" - 14 => 1/2"	8031408	1	1	1	1	1	1	1	1	1
4	Rotalock adapter, Rotalock to brazing, straight, Suction	1 1/4" - 12 => 3/4"	8016069	1	1	1	1	1	1	1	1	1
	Kit Rotalock adapter, with adapter-nut and gasket, Rotalock to brazing, straight, Suction	1 1/4" - 12 => 3/4"	8031419	1	1	1	1	1	1	1	1	1
5	Adapter-nut, Discharge		8016092	1	1	1	1	1	1	1	1	1
	Gasket		2495928	1	1	1	1	1	1	1	1	1
5	Adapter-nut, Suction		8015760	1	1	1	1	1	1	1	1	1
	Gasket		2495939	1	1	1	1	1	1	1	1	1
6	Rotalock adapter, Rotalock to brazing, angled, Suction	1" - 14 => 1/2"	2828202	1	1	1	1	1	1	1	1	1
	Gasket		2495928	1	1	1	1	1	1	1	1	1
	Kit Rotalock adapter with gasket, Rotalock to brazing, angled, Discharge	1" - 14 => 1/2"	8031442	1	1	1	1	1	1	1	1	1
6	Rotalock adapter, Rotalock to brazing, angled, Suction	1 1/4" - 12 => 7/8" 90°	2854021	1	1	1	1	1	1	1	1	1
	Gasket		2495939	1	1	1	1	1	1	1	1	1
	Kit Rotalock adapter with gasket, Rotalock to brazing, angled, Suction	1-1/4" - 12 => 7/8"	8031464	1	1	1	1	1	1	1	1	1
7	Kit mounting parts, damper, sleeves and spacer (single compressor)		8000822	1	1	1	1	1	1	1	1	1
	Kit mounting parts for 1 compressor, multiple operation (rubber)		8030450	1	1	1	1	1	1	1	1	1
8	Kit discharge gas thermostat with clip, external	T.O.D, 37TJ31 x 1976E, 240 V	2981196	1	1	1	1	1	1	1	1	1
9	Terminal box cover		8031657	1	1	1	1	1	1	1	1	1
9	Gasket for terminal box cover		8811322	1	1	1	1	1	1	1	1	1
	Grounding screw		8023550	1	1	1	1	1	1	1	1	1
11	Terminal block		8804353							1	1	1

